

SLEEPER SLAB REINFORCEMENT PLAN

SLEEPER SLAB PLAN

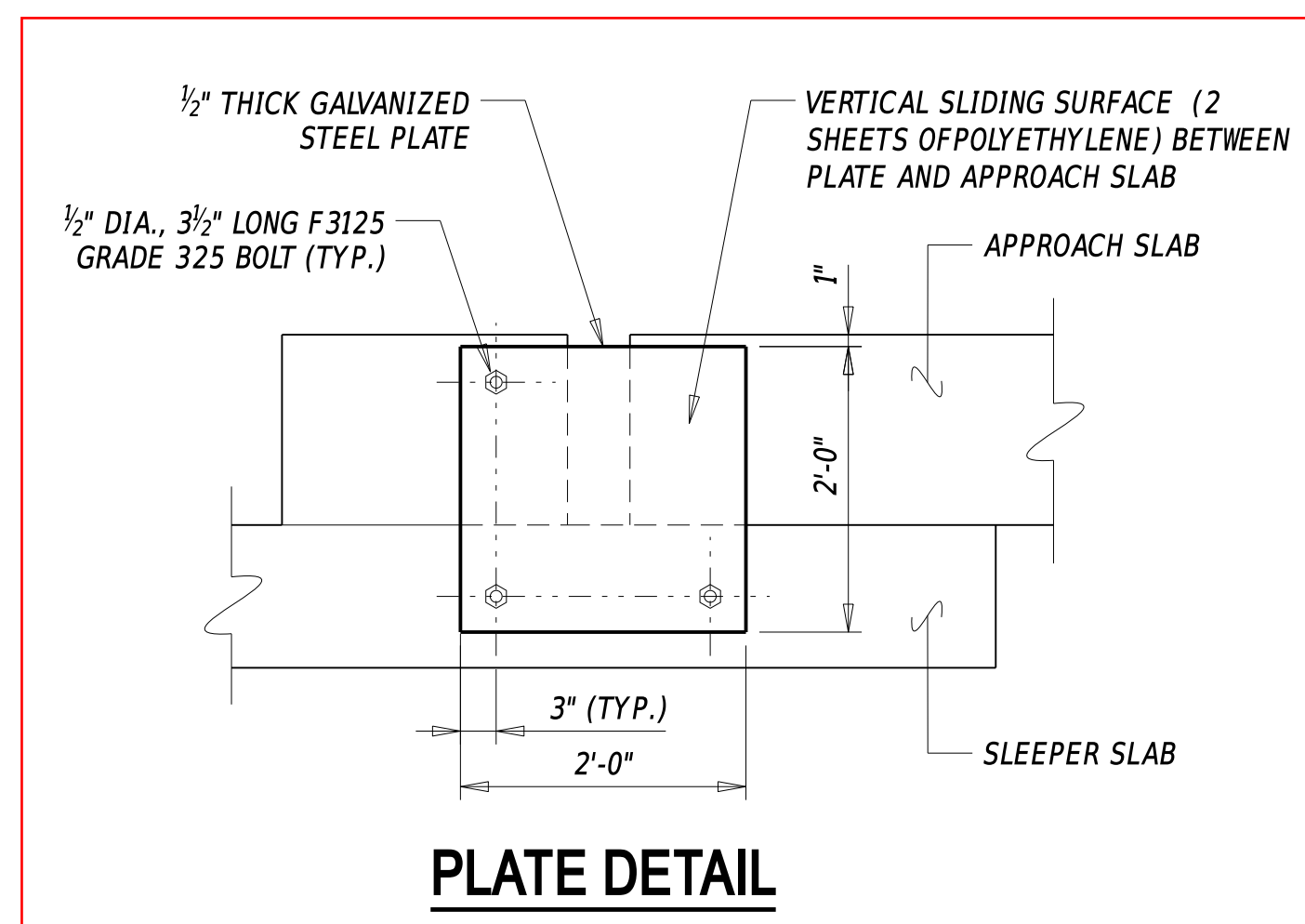
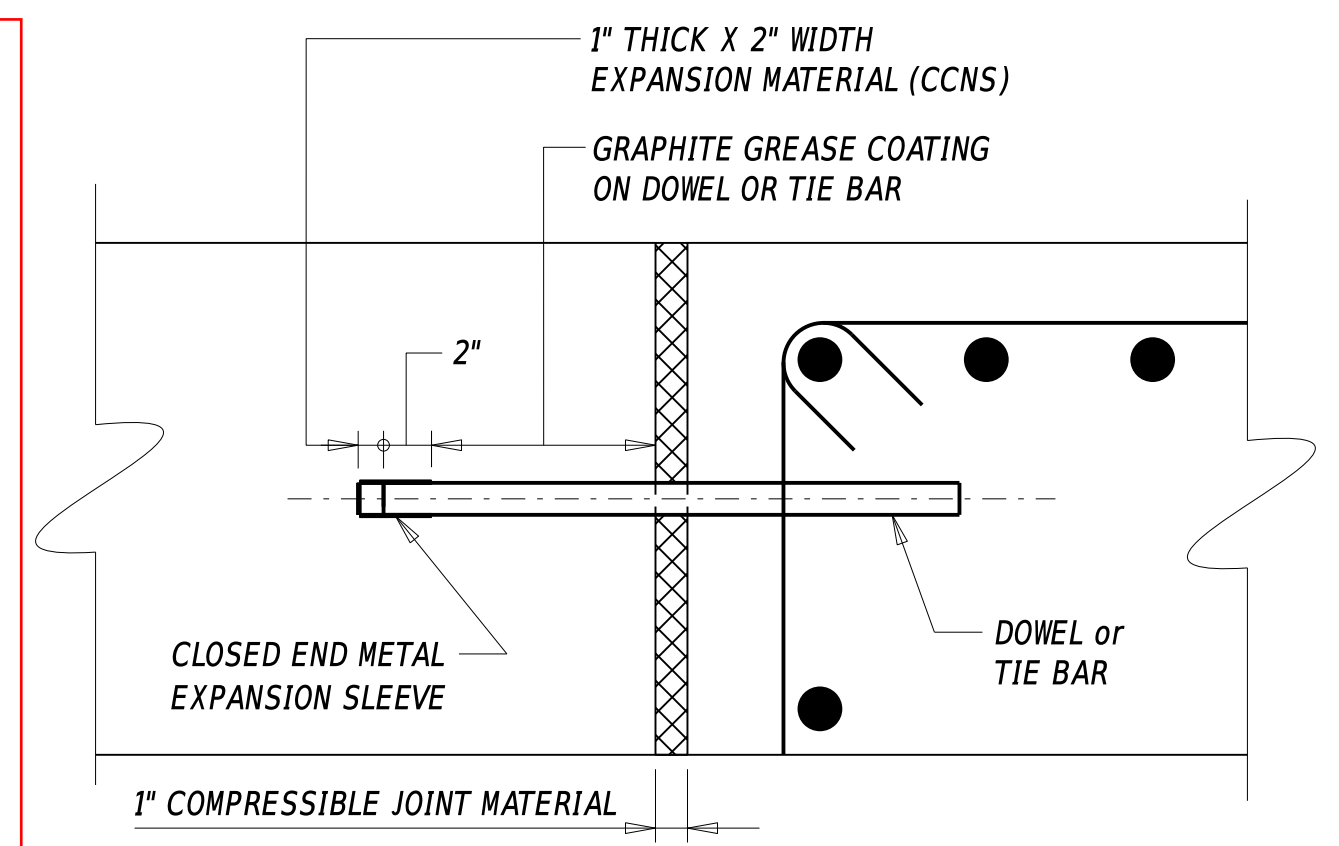
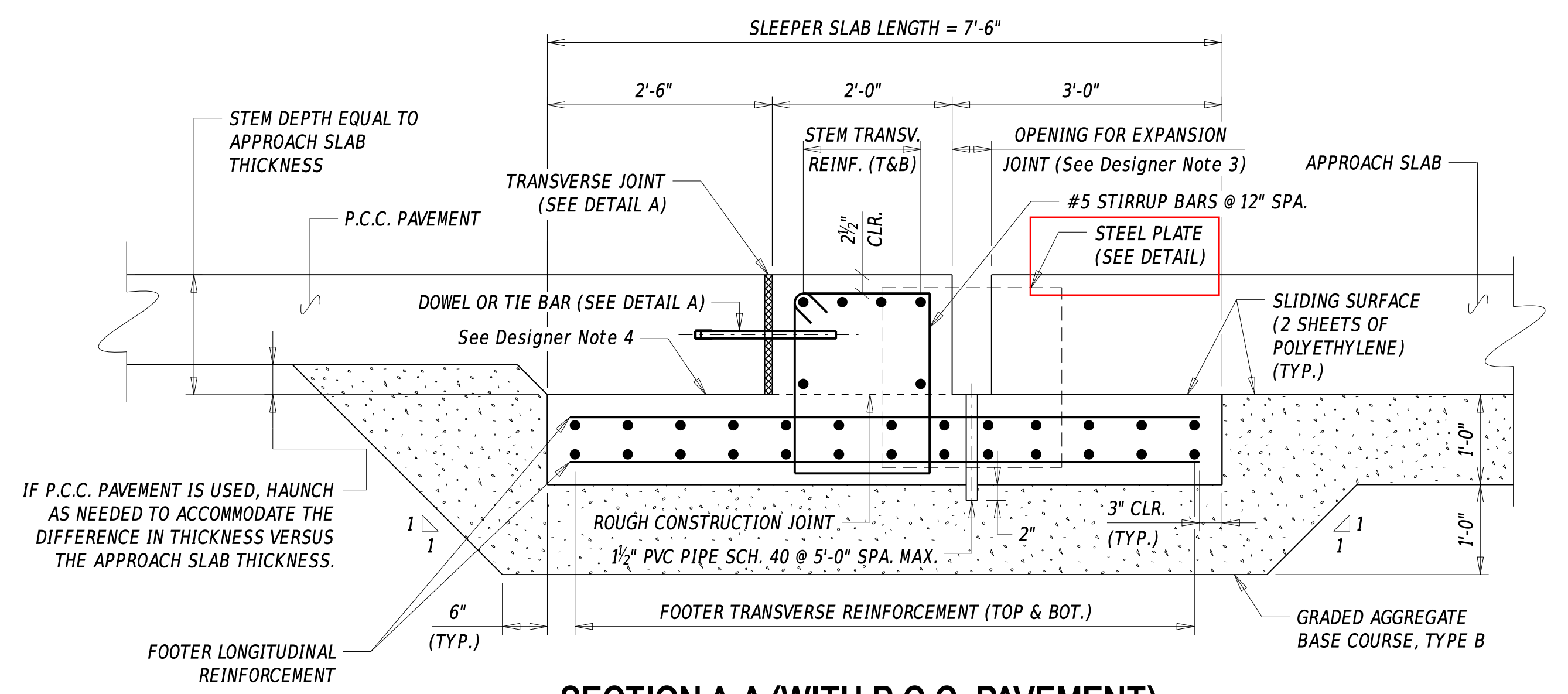


PLATE DETAIL



DETAIL A

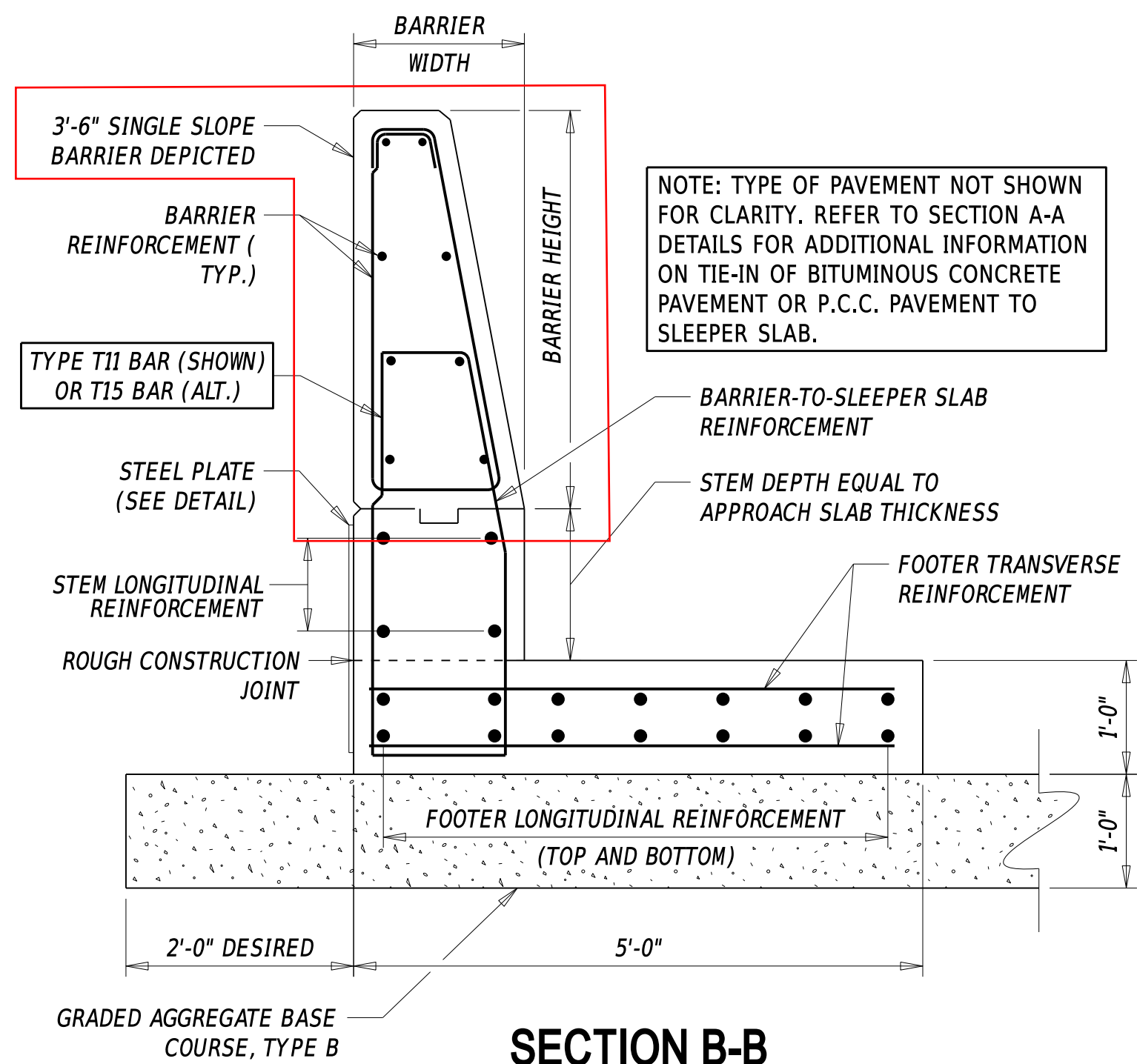
CCNS = CLOSED CELL NEOPRENE SPONGE



SECTION A-A (WITH P.C.C. PAVEMENT)

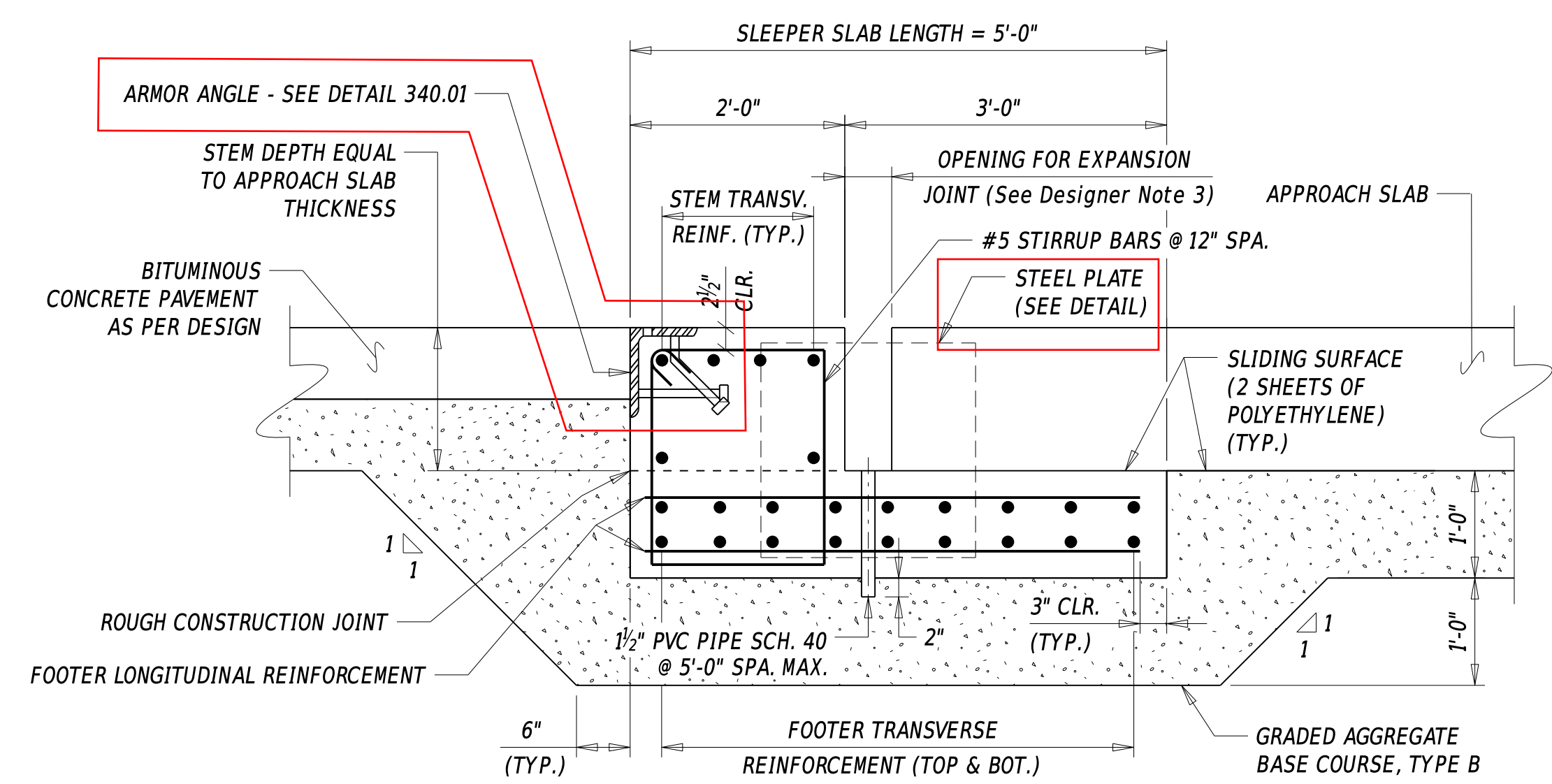
IF P.C.C. PAVEMENT IS USED, HAUNCH AS NEEDED TO ACCOMMODATE THE DIFFERENCE IN THICKNESS VERSUS THE APPROACH SLAB THICKNESS.

- DESIGNER NOTES**
- REFER TO SECTION 106.7.1 FOR MORE INFORMATION ON SLEEPER SLAB DESIGN.
 - SLEEPER SLABS SHALL BE REQUIRED FOR ALL PROJECTS THAT UTILIZE TYPE I INTEGRAL, TYPE IIC SEMI-INTEGRAL, AND TYPE IIIA OR IIIB DECK EXTENSION ABUTMENTS WHERE THE DECK JOINT IS PROVIDED AT THE ROADWAY END OF THE APPROACH SLAB. REFER TO DETAIL NO. 325.03 - APPROACH SLAB DETAILS.
 - THE PREFERRED EXPANSION JOINT TYPE BETWEEN THE ROADWAY END OF THE APPROACH SLAB AND SLEEPER SLAB IS STRIP SEAL EXPANSION JOINT. REFER TO DETAIL NO. 340.01 - STRIP SEAL EXPANSION JOINT.
 - PROVIDE SLIDING SURFACE BETWEEN BOTTOM OF P.C.C. PAVEMENT AND TOP OF SLEEPER SLAB FOOTER.
 - IT IS DELDOT'S PREFERENCE TO HAVE THE SLEEPER SLAB WIDTH EQUAL TO THE APPROACH SLAB WIDTH. REFER TO DETAIL NO. 325.03 - 'APPROACH SLAB DETAILS' FOR MORE INFORMATION.
 - BREAK POINTS SHOULD BE CALLED OUT AND SHOWN IN SLEEPER SLAB PLAN. IF POSSIBLE, ANY SUPERELEVATION TRANSITIONS SHOULD BE COMPLETED OUTSIDE THE LIMITS OF THE BRIDGE, INCLUDING THE LIMITS OF SLEEPER SLAB.
 - IT IS DELDOT'S PREFERENCE TO PAY FOR THE SLEEPER SLAB UNDER ITEM 610016 - PORTLAND CEMENT CONCRETE MASONRY, CLASS D.

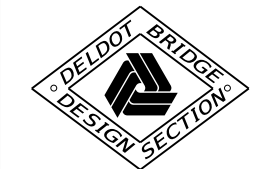


SECTION B-B

NOTE: TYPE OF PAVEMENT NOT SHOWN FOR CLARITY. REFER TO SECTION A-A DETAILS FOR ADDITIONAL INFORMATION ON TIE-IN OF BITUMINOUS CONCRETE PAVEMENT OR P.C.C. PAVEMENT TO SLEEPER SLAB.



SECTION A-A (WITH BITUMINOUS CONCRETE PAVEMENT)



ISSUE DATE	
10/01/2015	2022
10/01/2017	
01/31/2019	