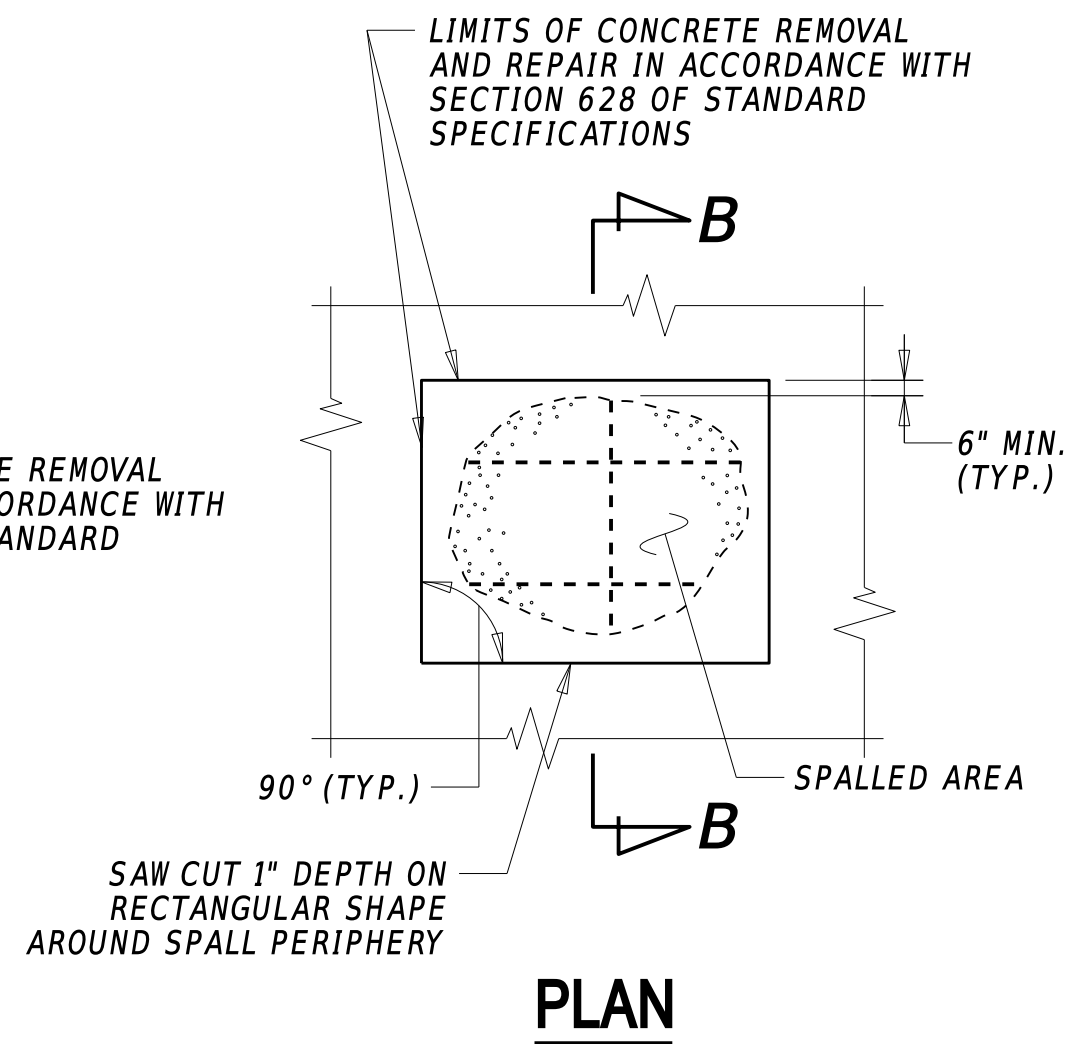
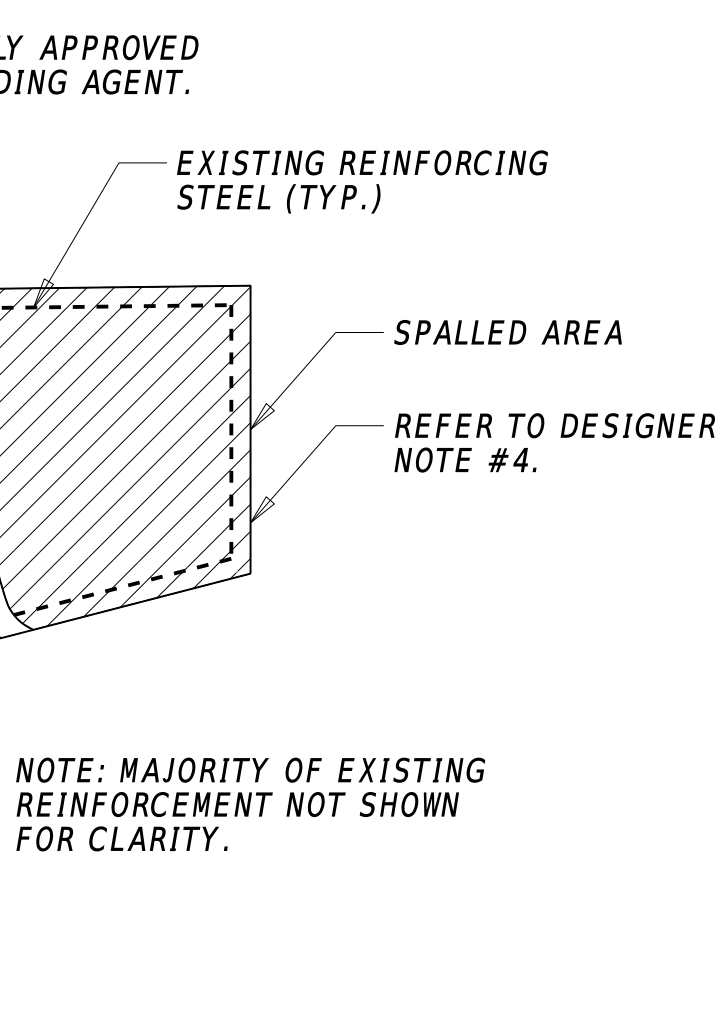


SHALLOW SPALL REPAIR



DEEP SPALL REPAIR



REHABILITATION OF PCC MASONRY

See Designer Note 4

SHALLOW SPALL REPAIR NOTES

1. SHALLOW SPALLS ARE DEFINED AS PATCHES THAT DO NOT EXTEND BELOW THE TOP MAT OF REBAR.
2. ALL WORK INVOLVING METHODS OF CONCRETE REMOVAL, CLEANING OF CONCRETE SURFACE, SURFACE PREPARATION, AND CONCRETE PLACEMENT SHALL BE PERFORMED IN ACCORDANCE WITH SECTION 628.3.4 OF THE STANDARD SPECIFICATIONS. PAYMENT INCIDENTAL TO 628040 - SHALLOW SPALL REPAIR.

DEEP SPALL REPAIR NOTES

1. DEEP SPALLS ARE DEFINED AS PATCHES THAT EXTEND BELOW THE TOP MAT OF REINFORCEMENT.
2. ALL WORK INVOLVING METHODS OF CONCRETE REMOVAL, CLEANING OF CONCRETE SURFACE AND EXISTING REINFORCEMENT, REPAIRING OR REPLACING DAMAGED REINFORCEMENT AS RESULT OF CONSTRUCTION ACTIVITIES OR SECTION LOSS, PRESENCE OF CONTRACTION OR EXPANSION JOINTS, SURFACE PREPARATION, AND CONCRETE PLACEMENT SHALL BE PERFORMED IN ACCORDANCE WITH SECTION 628.3.4 OF THE STANDARD SPECIFICATIONS. PAYMENT INCIDENTAL TO 628041 - DEEP SPALL REPAIR.

DECK REPAIR NOTES

1. ALL WORK INVOLVING METHODS OF CONCRETE REMOVAL, CLEANING OF CONCRETE SURFACE AND EXISTING REINFORCEMENT, REPAIRING OR REPLACING DAMAGED REINFORCEMENT AS RESULT OF CONSTRUCTION ACTIVITIES OR SECTION LOSS, PRESENCE OF CONTRACTION OR EXPANSION JOINTS, SURFACE PREPARATION, AND CONCRETE PLACEMENT SHALL BE PERFORMED IN ACCORDANCE WITH SECTION 628.3.5 OF THE STANDARD SPECIFICATIONS. PAYMENT INCIDENTAL TO 628050 - DECK REPAIR, 1/2" TO 1" DEPTH; 628051 - DECK REPAIR, 1" TO 3" DEPTH; 628052 - DECK REPAIR, 3" TO < FULL DEPTH; AND/OR 628053 - DECK REPAIR, FULL DEPTH.
2. MILLING AND OVERLAY SHALL BE PAID FOR UNDER THEIR RESPECTIVE ITEMS.

REHABILITATION OF PCC MASONRY

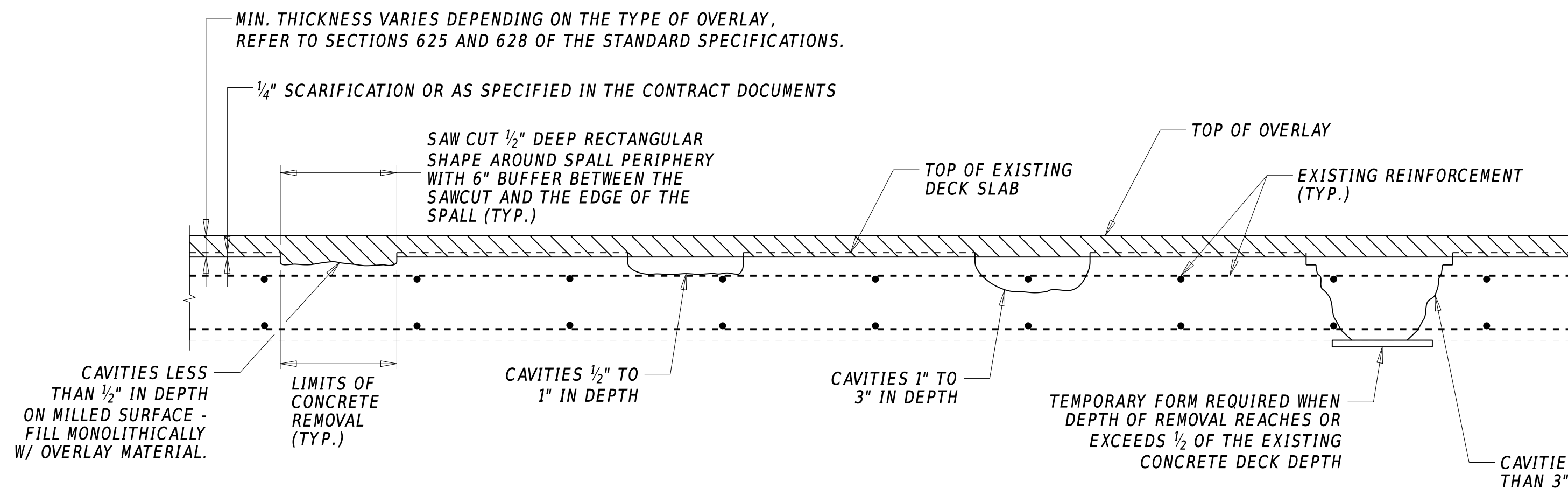
1. REHABILITATION OF PCC MASONRY IS DEFINED AS DEEP SPALL PATCHES THAT EXCEED THE 0.5 C.Y. THRESHOLD IN A SINGLE AREA.
2. ALL WORK INVOLVING METHODS OF CONCRETE REMOVAL, CLEANING OF CONCRETE SURFACE AND EXISTING REINFORCEMENT, REPAIRING OR REPLACING DAMAGED REINFORCEMENT AS RESULT OF CONSTRUCTION ACTIVITIES OR SECTION LOSS, PRESENCE OF CONTRACTION OR EXPANSION JOINTS, SURFACE PREPARATION, AND CONCRETE PLACEMENT SHALL BE PERFORMED IN ACCORDANCE WITH SECTION 628.3.4 OF THE STANDARD SPECIFICATIONS. PAYMENT INCIDENTAL TO 628042 - REHABILITATION OF PCC MASONRY.

REHABILITATION WORK WITHIN THE SPLASH ZONE OR UNDERWATER

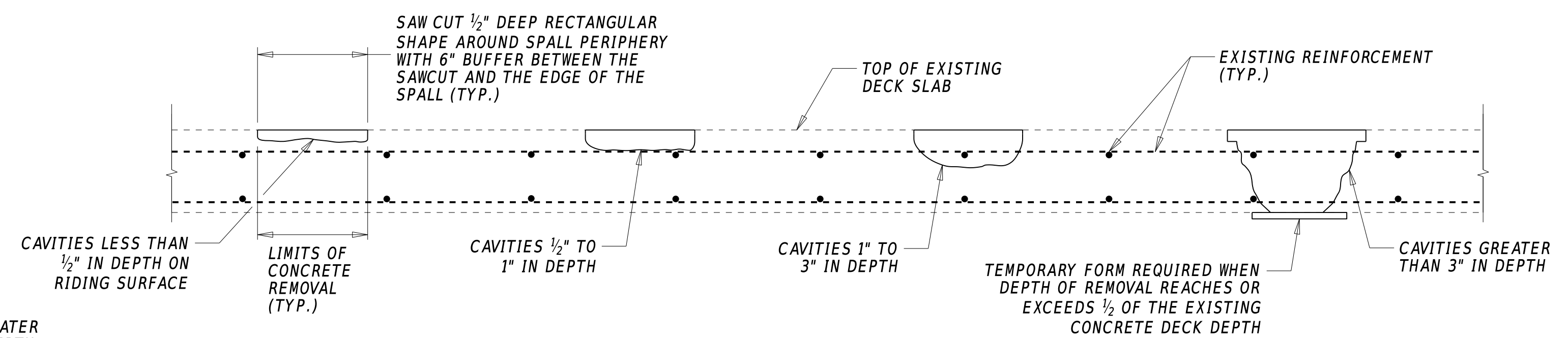
1. (for projects where rehabilitation work occurs within the splash zone or underwater) FOR ANY REMOVAL OR REHABILITATION WORK TO TAKE PLACE WITHIN THE SPLASH ZONE OR UNDERWATER, SUBMIT A CONCRETE REPAIR WORKING DRAWING FOR THE PROPOSED REPAIR MEANS AND METHODS.

DESIGNER NOTES

1. THE DETAILS DEPICTED ON THIS SHEET ARE LARGELY DERIVED FROM SECTION 628 OF THE STANDARD SPECIFICATIONS. THE PURPOSE OF THE DETAILS SHOWN ON THIS SHEET IS TO ASSIST WITH VISUALIZING THE REPAIR METHODS TYPICALLY USED ON DELDOT PROJECTS.
2. THE DETAILS AND NOTES AS SHOWN ON THIS SHEET ARE REQUIRED TO BE SHOWN ON PLAN SETS WHICH REQUIRE SUCH REPAIRS.
3. IF SUCH INFORMATION IS READILY AVAILABLE DURING PLAN DEVELOPMENT, THE DESIGNER SHOULD SHOW ON THE PLANS THE APPROXIMATE LOCATIONS AND DIMENSIONS OF THE SPALL REPAIRS AT BOTH SUBSTRUCTURE AND DECK LOCATIONS. THE QUANTITY CALCULATIONS SHOULD ALSO CLEARLY IDENTIFY AND EXPLAIN IN DEPTH WHICH ITEMS ARE TO BE USED AND THEIR ESTIMATED QUANTITIES AT EACH LOCATIONS, WITH ANY CONTINGENCIES OR TOKEN QUANTITIES ASSUMED.
4. THE DETAILS SHOWN FOR 'REHABILITATION OF PCC MASONRY' UTILIZES AN EXAMPLE USING PARTIAL RECONSTRUCTION OF AN EXISTING PIER CAP. THE DESIGNER SHOULD SHOW APPROXIMATE LOCATIONS AND ESTIMATED QUANTITY OF CONCRETE TO BE REMOVED AT EACH STRUCTURAL UNIT ON THE PLANS WHICH REQUIRE PARTIAL RECONSTRUCTION.
5. REPAIR DETAILS FOR PRESTRESSED OR POST-TENSIONED CONCRETE ELEMENTS WERE INTENTIONALLY OMITTED FROM THIS DETAIL. THESE TYPES OF REPAIRS ARE UNIQUE AND WILL VARY FROM PROJECT TO PROJECT. THE DESIGNER IS RESPONSIBLE FOR DEVELOPING APPROPRIATE REPAIR DETAILS FOR THESE TYPES OF CONCRETE ELEMENTS.
6. REHABILITATION WORK BENEATH AN EXISTING BRIDGE AND NEAR THE WATERLINE CAN BE DIFFICULT TO ACCOMPLISH, ESPECIALLY WITHIN THE SPLASH ZONE (PILE BENT STRUTS CAN BE PARTICULARLY PROBLEMATIC). SINCE THE DETERIORATED ELEMENT CANNOT BE ISOLATED WITHIN A COFFERDAM, THE REPAIR HAS TO BE COMPLETED WHILE WORKING AROUND SITE CONDITIONS. WHERE APPROPRIATE, INCLUDE THE PROJECT NOTE FOR WORKING DRAWINGS TO ESTABLISH A PLAN FOR EXECUTING THE WORK PRIOR TO CONSTRUCTION. SEE SECTION 109.11.3.3 FOR MORE INFORMATION.



DECK REPAIR (WITH OVERLAY)



DECK REPAIR (WITHOUT OVERLAY)

